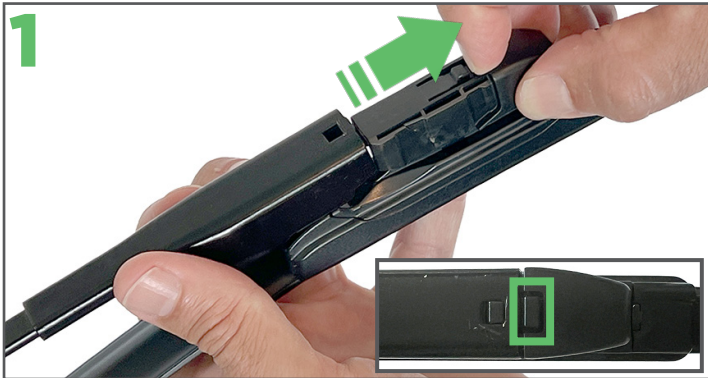




INSTALLATION INSTRUCTIONS



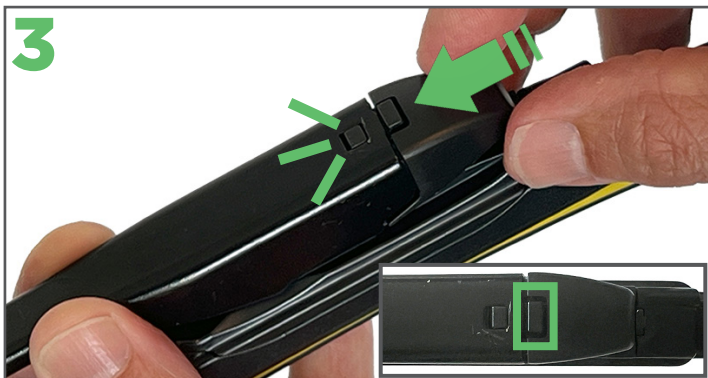
ECOSPORT FRONT WIPER BLADE



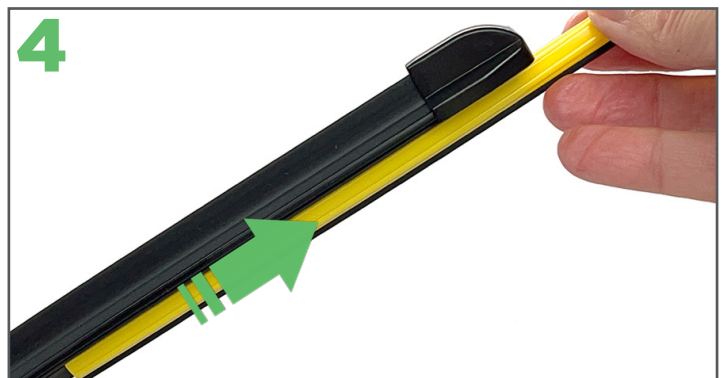
1
To remove the current wiper blade push the clip down (see inset) and slide the blade away from the arm.



2
Next, remove the new Ezywiper blade from its packaging.
To fit the Ezywiper blade, line the wiper blade up with the arm.



3
Push the clip (see inset) then slide the blade in until it locks into place.



4
Remove the protective sleeve from the Ezywiper blade then place the arm back on the windscreen.



5
Check the low spoiler side of the blade faces the bottom of your windscreen.

For installation videos and more info see ezywiper.co.nz