

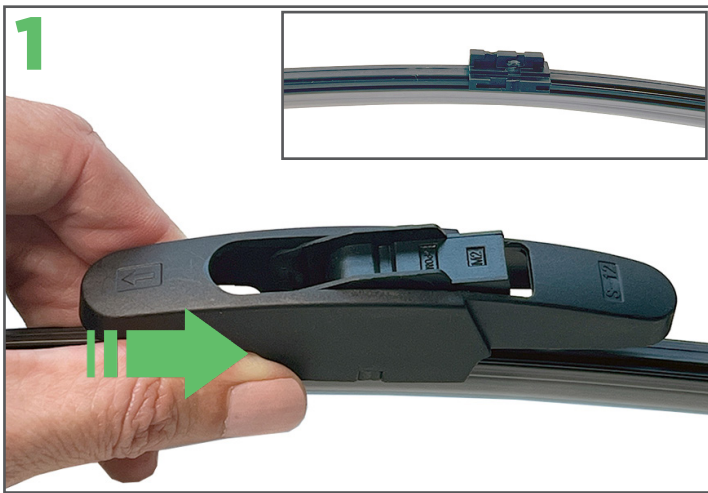


INSTALLATION INSTRUCTIONS

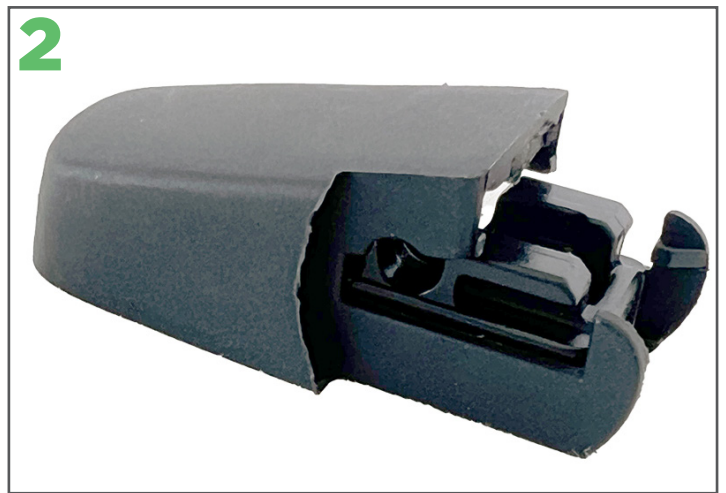


V-NOTCH REAR WIPER BLADE

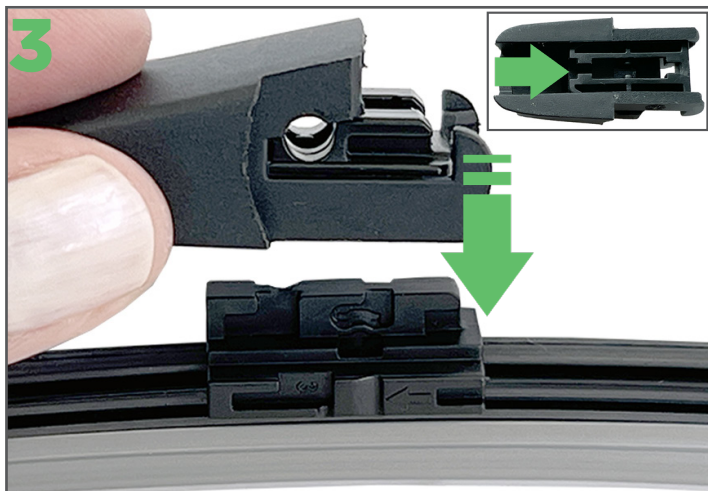
STEP 1: PREPARE THE EZYWIPER BLADE



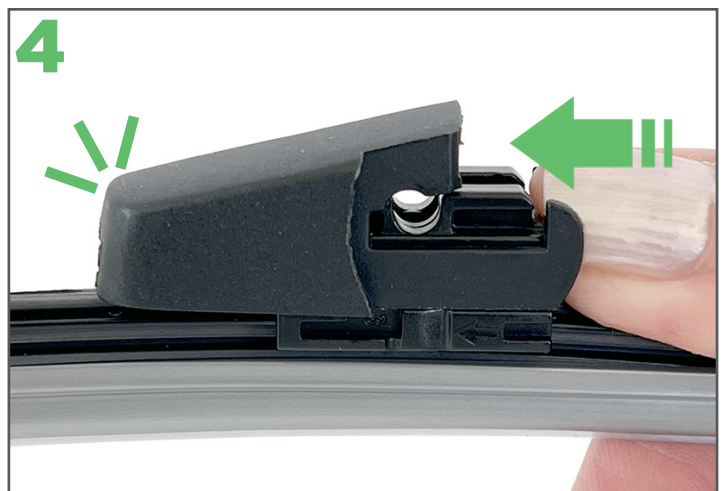
Remove the new Ezywiper blade from its packaging. Your car's wiper arm needs a different adaptor than the one on the Ezywiper blade. To remove the adaptor, locate the arrow at the top of the adaptor, then gently push in the opposite direction until the adaptor disengages (see the inset for what the wiper looks like once the adaptor is removed).



Select the V-Notch adaptor from the bag of adaptors supplied with the blade.

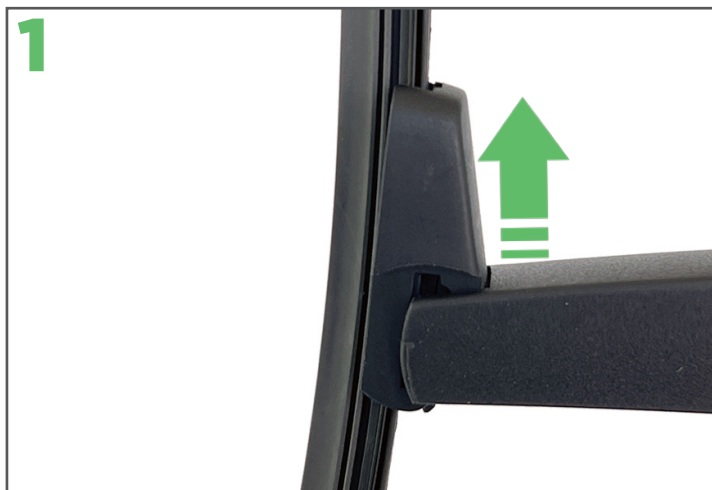


The bottom of the adaptor has a slot that fits over the mount on the blade (see inset). Check the arrow on the blade mount is pointing to the front (the nose) of the adaptor. Line the adaptor up with the mount then gently fit it onto the mount.



Slide the adaptor in the direction of the blade mount's arrow until the adaptor clicks into place.

STEP 2: FIT THE EZYWIPER BLADE



Lift the car's rear wiper arm off the rear screen then gently tilt the blade until it is at 90° to the arm.



Gently rock the blade and lift it upwards so it disengages from the arm.



To fit the new Ezywiper blade, hold it at 45° to the arm and place it in position.



Gently push the Ezywiper blade onto the arm until it locks into place.



Don't forget to remove the protective sleeve from the Ezywiper blade before placing the arm back on the rear screen.



For installation videos and more info see ezywiper.co.nz