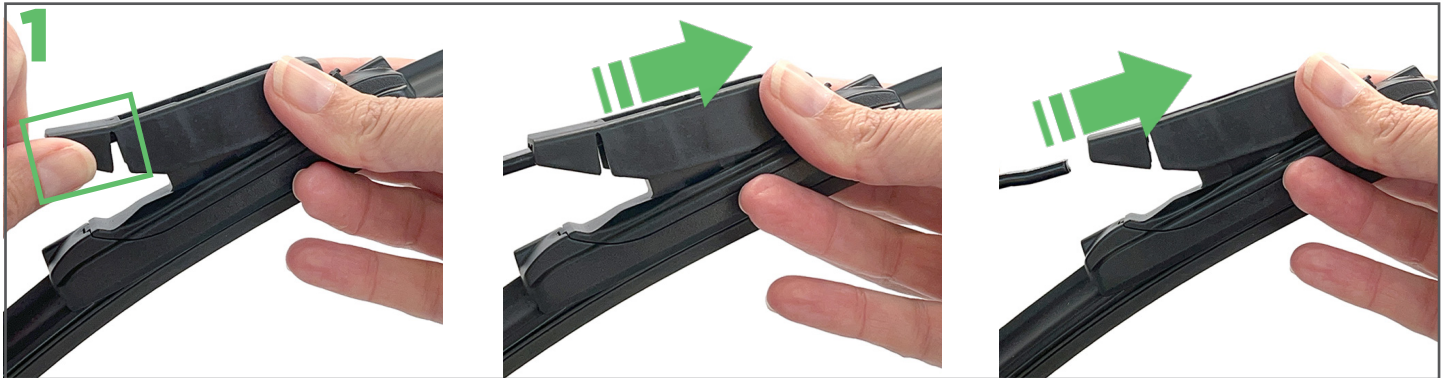




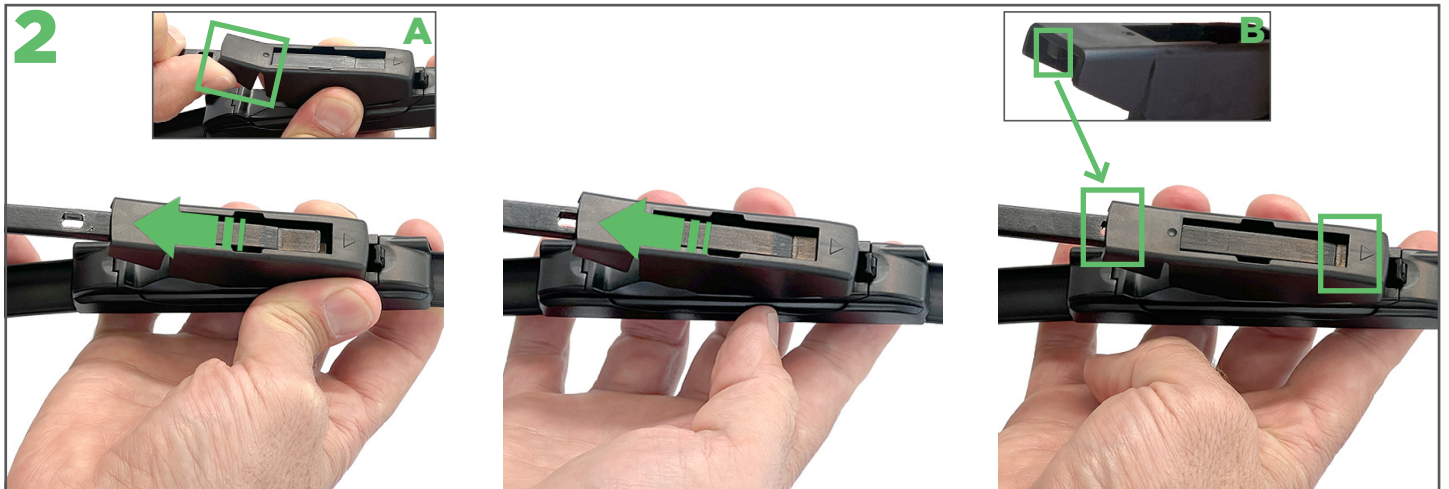
INSTALLATION INSTRUCTIONS



BAYONET FRONT WIPER BLADE

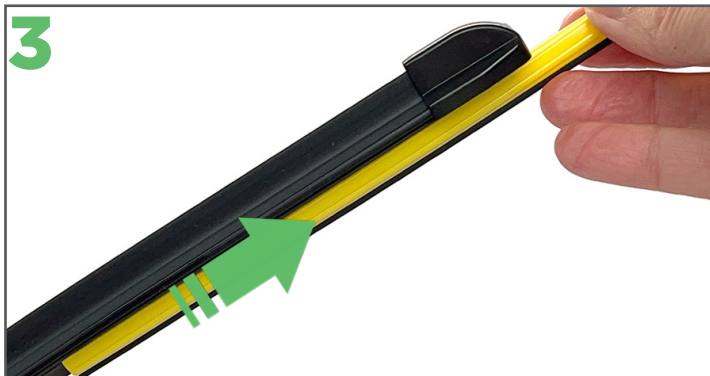


To remove the current wiper, pull the tabs down or lift the locking tabs (depending on the style of your wiper) and slide the blade off the arm.



Next, remove the new Ezywiper blade from its packaging.

To fit the Ezywiper blade, lift the locking tab on the adaptor (see inset A) then slide the arm into the slot on the wiper adaptor until the tab at the end of the adaptor (see inset B) locks into the hole on the arm.



Remove the protective sleeve from the Ezywiper blade then place the arm back on the windscreen.



Check the low spoiler side of the blade faces the bottom of your windscreen.

For installation videos and more info see ezywiper.co.nz